



Contents



Preface



Organization Structure



Low voltage Products & System



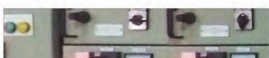
Automation and Controls



Area of Application



Major Clients



Key Reference List



Approvals & Certification



Preface



Our Company

Prime Projects International Group of companies is one of the multifaceted business groups in the UAE and is engaged in a wide range of systems/services. Prime Electrical Manufacturing is one of the prime group companies specialized in Low Voltage Switchgear & Automation system like PLC, RTU, SCADA, TELEMETRY and INTELLIGENT MICCs. Our Company was established in 2005, and has continued expansion of operations.

Prime Electrical Manufacturing (PEM) IS AN ISO 9001 company and an integrated energy solutions Franchise partner of Schneider Electric providing switchgear, automation and control solutions.

Prime Electrical Manufacturing "Automation Division" is a leading automation system integrator in the Far East and MENS. The division is established in the year 2006 to provide engineering systems and project management facilities in the field of E&I for control and instrumentation. With exceptional capabilities and

expertise acquired over the year, we are front-runner in supplying quality automation and control system through the region. We provide our clients and customers with the highest quality and standards meeting specification requirements and delivering on time fully operational systems. Quality is the key in all facets of our operations and we are committed to provide top quality products and services to our clients and customers throughout the world.

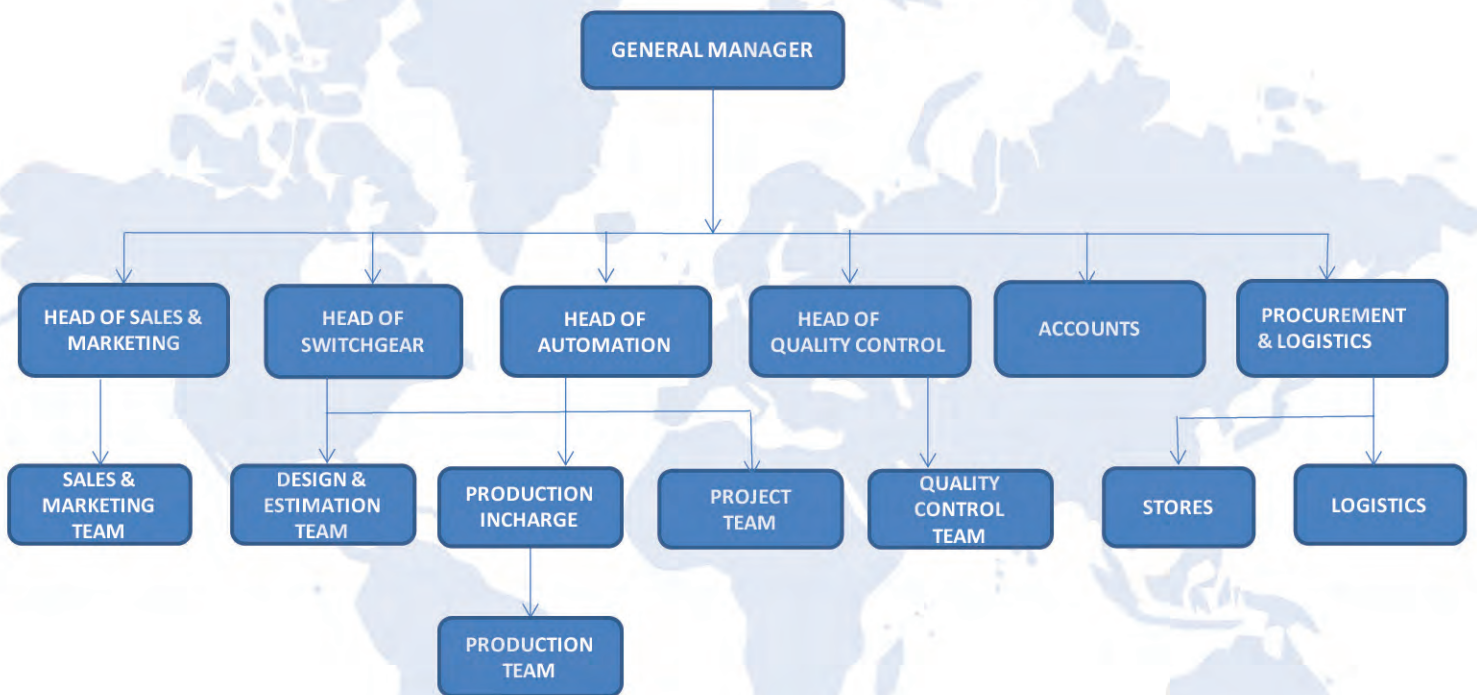
Company Resource

The PEM head office is located in the Twin Towers in Dubai, with extensive manufacturing facilities located in the Dubai Industrial City has over 129,167 sq.ft of covered and airconditioned workshop with storage yards 48,438 sq.ft area these provide facilities for Motor Control Centers (MCC), Main Distribution Boards (MDB's), Sub-distribution boards (SMDB's) complete with automation, control and monitoring systems. Our manufacturing facility are Staffed by a team of professional engineers and support staff, enabling Prime to provide a first class service and after completion support to clients and customers covering the full system design, engineering solution, system construction, assembly, specialised manufacturing and full automaton and control integration combined with extensive system test facilities.

Prime Steel Fabrication has state of the art manufacturing facility spread in an area of 100,000 square feet at Dubai Industrial city and Dubai Investment Park with team of qualified and experienced engineers and technicians. Prime steel fabrication manufacture high quality product to international standard.



Organization Structure



Low Voltage Products & System

Products

PEM Scope of Supply

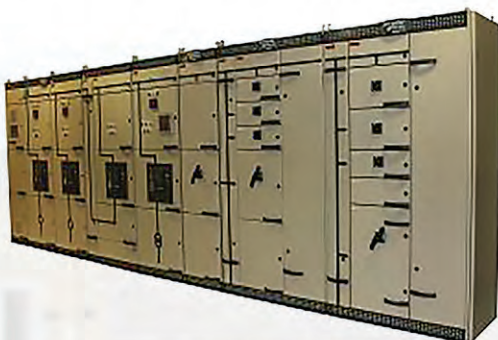
- L.V. Main, Sub-Main And Final Distribution Boards Systems
- LVAC Boards
- Power Factor Correction Capacitors Bank
- Automatic And Manual Transfer Panels
- Motor Control Centres
- Bus Duct/Bus Riser
- Generator Synchronising And Load Sharing Systems
- Feeder Pillars
- Process Automation – PLC / RTU / SCADA
- Package Mounted Substation



LVAC Panel



Main Distribution Board



Synchronization Panel



Capacitor Bank



ATS Panel

Low Voltage Products & System



Sub Main Distribution Boards



Motor Control Centers



Final Distribution Boards



Package Substations

Automation Controls

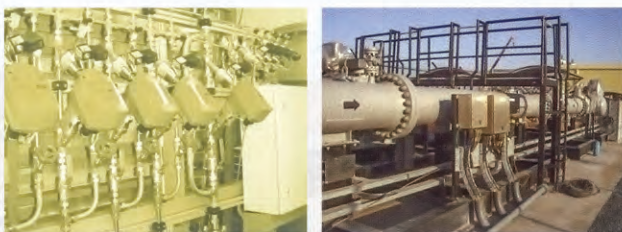
Supervisory Control And Data Acquisition (SCADA)

We provide configuration of the most commonly used SCADA systems, linked with PLC's and RTU's as the applications require these products fully integrated with communications package as required to deliver a reliable, flexible and high performance distributed control system and/or a total telemetry control and monitoring system. We have implemented many of these systems such as Wonderware intouch, Simplicity, RS View 32, Client, Maser Control and Serck SCX Clean SCADA



Field Instrumentation, Plant cabling, Engineering, Installation and commissioning

We undertake the complete instrumentation work as a package which includes the supply of instruments, type selection, Installation, testing calibration and commissioning.



Power Control

Prime select, design, manufacture, install, connect and commission power control systems ranging from DB's to intelligent MCC's with smart drive systems for applications where precise load and power control are required Prime offers and provides a comprehensive portfolio of specialised personnel.

Intelligent Motor Control Centers

Intelligent motor control centers are offered to optimise the amount of space required in enclosures, to eliminate power wiring between the circuit breaker and contractor and to reduce installation costs. Different communication protocols like TCP/IP, Modbus, Profibus are the most common protocols enabling the control units to be seamlessly integrated in to larger systems.

Automation Controls

System Functional Testing

- Client Witnessed Tests (FAT)
- Installation
- Site Acceptance Tests
- Commissioning
- Operation & Maintenance
- Training

Quality Services



At Prime we understand that to be consistent to meet client's and customer demands requires stringent business processes. Our QA and comprehensive procedures have been audited and commented on by industry leading ISO business practices. These ensure complete quality without being a burden in terms of costs to all works from start to finish.

Through the continual improvement programs we are continually improving and expanding our quality system accreditations, to stay on top of the latest methodologies.



Programmable Logic Controller (PLC)



Client Witness Test (FAT)



Area of Application

Area of Application

Commercial and Industrial buildings
 Petrochemical Process Plant
 Metal processing plants
 Oil and Gas process plants
 Gas and Leakage monitoring systems
 Fuel Tank Farm monitoring systems

Water Pumping net works
 Sewerage treatment plant
 Reverse osmosis plants
 Energy management system
 Schools & Hospitals
 Military Projects

Consultant	Jalila Hospital	2014-2015
Studio Altieri 	Scope of Supply <ul style="list-style-type: none"> • LVAC BOARDS • Sub-main Distribution Boards • Final Distribution Boards • Motor Control Centre 	Contractor Sensaire Services

Consultant	K-Race Project, Abu Dhabi	2009-2011
Tilke 	Scope of Supply <ul style="list-style-type: none"> • Main Distribution Boards • Sub-main Distribution Boards • Final Distribution Boards • Motor Control Centre • Automatic Transfer Switch 	Contractor Musco Lighting 

Consultant	Burjuman Centre Expansion	2014-2015
Hyder Consultant 	Scope of Supply <ul style="list-style-type: none"> • LVAC BOARDS • Sub-main Distribution Boards • Final Distribution Boards • Motor Control Centre 	Contractor United Masters 

Consultant	RAK Bank @ DSO, Dubai	2009-2010
Mario Associates 	Scope of Supply <ul style="list-style-type: none"> • Main Distribution Boards • Sub-main Distribution Boards • Final Distribution Boards • Motor Control Centre • Automatic Transfer Switch 	Contractor B.K.Gulf 

Consultant	Nestle Manufacturing LLC	2015
WSP 	Scope of Supply <ul style="list-style-type: none"> • LVAC BOARDS • Sub-main Distribution Boards • Final Distribution Boards • Motor Control Centre 	Contractor AMANA 

Consultant	Ruwais Housing Complex, UAE	2009-2010
Architectural & Planning Group 	Scope of Supply <ul style="list-style-type: none"> • Main Distribution Boards • Sub-main Distribution Boards • Final Distribution Boards • Motor Control Centre • Automatic Transfer Switch 	Contractor Dubai Masters 

Major Clients

Major Clients

CLIENT	PROJECT
DUBAL	DUBAL CONTRACT - E11/067(MP55)
	DUBAL CONTRACT - E13/003
EMPOWER SOLUTIONS	BUSINESS BAY - PHASE -1&2, TP3, TP4, TP9, TP10, TP11, TP15
	VARIOUS TEMPORARY CHILLER PLANTS AT AJMAL SARA, ETA STAR AND ALL
ADNOC	MALE & FEMALE SCHOOLS @ MADINAT ZAYED
	RUWAIS HOUSING COMPLEX
ADEC	AL QUAA SCHOOL
	AL WAGAN SCHOOL
	MEZYAD SCHOOL
	UMM GHAFSA SCHOOL - K
DEWA	SHEIKH MOHAMMED BIN RASHID AL MAKTOUM SOLAR PARK 13MW PHOTOVOLTAIC POWER PLANT
ALDAR	RACE PROJECT, ABU DHABI
MINISTRY OF PUBLIC WORKS	UMM AL QUWAIN HOSPITAL, UAE
EMAAR	DOWNTOWN DUBAI DEVELOPMENT INFRASTRUCTURE
EMAAR	DOWNTOWN DUBAI DEVELOPMENT INFRASTRUCTURE
ETIHAD RAILWAYS	SHAH HABSHAN RUWAIS RAILWAY PROJECT
ERC	ADCOP PACKAGE SUBSTATIONS

Key Reference List

PROJECT NAME	CONTRACTOR / CONSULTANT	CLIENT
ABU DHABI PLAZA, ASTANA, KAZAKHSTAN	EFFICO/ ARABTECH	ALDAR
ARZANAH MEDICAL COMPLEX	ROTARY HUM /AL HABTOOR ENGINEERING LLC	MEDICAL HOLDING COMPANY LLC
UMM AL QUWAIN GENERAL HOSPITAL	BPOWER	UAQ HOSPITAL
SEVENTH HEAVEN	INTERNATIONAL ELECTRO MECHANICAL SERVICES LLC / WSP PARSONS BRINCKERHOFF	AL BARARI
YAS ISLAND RACE TRACK	VOLTAS LIMITED	ALDAR
ETIHAD RAIL PROJECT - PMPT PACKAGE SUBSTATION	SAIPEM/DODSAL	ETIHAD RAIL
MP55 - PLANT WIDE SUBSTATION PROGRAM	ETA POWER PROJECTS DIVISION	DUBAL - (EMIRATED GLOBAL ALUMINA)
BRAZIL FOOD FACTORY	BRIDGEWAY ELECTROMECHANICAL LLC	FEDERAL FOODS
AL JALILA CHILDREN'S SPECIALITY HOSPITAL	SENSAIRE SERVICES LLC	AL JALILA HOSPITAL/ DUBAI MUNICIPALITY
CITY OF LIGHTS	JAMES L WILLIAMS	BROOKFIELD MULTIPLEX
DUCAB HV & EHV FACILITIES DX00626	MAC AIR	DUCAB
RENOVATION OF AL BATEEN PALACE	CAPRIOLE CONSTRUCTION	CROWN PRINCE COURT
NESTLE FACTORY	AMANA/WSP	NESTLE
BURJUMAN CENTRE - REFURBISHMENT PROJECT (B1)	ECC / HYDER CONSULTING	BURJUMAN CENTRE
PT-164 WAREHOUSE PHASE III, AT DUBAI INDUSTRIAL CITY	AMANA	DUBAI INDUSTRIAL PARK/CITY
AL BADIE HOTEL CAPITAL CENTER	INTERNATIONAL ELECTRO MECHANICAL SERVICES LLC	MOHAMMAD JONÁN AL BADIE AL DHAHIRI
UAE MEDIA CITY HOTEL - DUBAI UAE	INTERNATIONAL ELECTRO MECHANICAL SERVICES LLC	THALIA REAL ESTATE LLC
CONSTRUCTION OF MALE AND FEMALE HIGH SCHOOL AT MADINAT ZAYED CITY, ABU DHABI PROJECT NO. 6022	TRINITY/SYSTEM CONSTRUCT	ABU DHABI NATIONAL OIL CORPORATION

Key Reference List

PROJECT NAME	CONTRACTOR / CONSULTANT	CLIENT
BUSINESS BAY - PHASE 1 & 2	EMPOWER ENERGY SOLUTIONS	EMPOWER ENERGY SOLUTIONS
RAK BANK AT RAK	BK GULF	MARIO ASSOCIATES
PROPOSED OFFICES & LOGISTIC FACILITY FOR ALMARAI COMPANY ON PLOT #531-556, AT DUBAI INDUSTRIAL CITY	BRIDGEWAY ELECTROMECHANICAL LLC	ALMARAI COMPANY
OLGANA TOWER	MEP DELTA	ABYAAR REAL ESTATE DEVELOPMENT
JORDAN IPP3 POWER PLANT	CENTAUR SECURITY & SAFETY TRADING	LOTTE ENGINEERING & CONSTRUCTION
AL TADAWI HOSPITAL AT AL GARHOUD DUBAI	SENSAIRE SERVICES LLC	AL TADAWI HOSPITAL
GTG FOR FRAME 6B	INTERNATIONAL ENERGY RESOURCES	INTERNATIONAL ENERGY RESOURCES
RAK BANK AT DSO	BK GULF	MARIO ASSOCIATES
HITACHI FRAME 39MW/11KW GTG PACKAGES	INTERNATIONAL ENERGY RESOURCES	INTERNATIONAL ENERGY RESOURCES
B+G+M+11+TYP+HC+ROOF BLDG	AL FARAA GEN CONT CO.	MR AWAD SAEED SOWAILM AL KETBI.
CAUSTIC SODA PLANT	NUBERG ENGINEERING LTD	AL GHAITH INDUSTRIES
CONSTRUCTION & MAINTENANCE OF KHATM AL SHAKLA POLICE STATION	NAEL ENERGY	POLICE PROJECTS COMMITTEE
YAS ISLAND RACE TRACK	MUSCO LIGHTING	YAS TRACK
AJMAN TREATMENT PLANT PROCESS ENHANCEMENT MODIFICATION	VEOLIA WATER / HALCROW	AJMAN SEWERAGE (PRIVATE) COMPANY LIMITED
FRAME 6581 GAS TURBINE POWER GENERATION	INTERNATIONAL ENERGY RESOURCES	INTERNATIONAL ENERGY RESOURCES
UAE ARMED FORCES	AMANA	UAE COMMAND OF MILITARY WORKS
PROPOSED DISTRIBUTION CENTRE FOR PANALPINA	AMANA STEEL BLD. CONT CO LLC	HI-FLOW LOGISTICS TWO DWC-LLC
SHEIKH MOHAMMED BIN RASHID AL MAKTOUM SOLAR PARK 13MW PHOTOVOLTAIC POWER PLANT PO344120297	FIRST SOLAR / ILF CONSULTING ENGIENERS	DEWA

Approvals & Certification

ASTA

CERTIFICATE OF SELECTED TYPE TESTS

Laboratory Ref. No: **2676.1364.6.684** Certificate No. **16486**

APPARATUS: 415 V / 660 V / 8 kV (U_n / U_i / U_h), 50 Hz low-voltage switchgear assembly incorporating a three-phase with neutral and protective main busbar system and four outgoing circuits

DESIGNATION: Distribution Board - 2500 A

MANUFACTURER: Prime Electrical Manufacturing
Dubai Investment Park
P.O. Box: 122496
Dubai
UNITED ARAB EMIRATES

TESTED BY: Institut „Profitec“ für elektrische Hochleistungstechnik“ GmbH
Landsberger Allee 378 A
12681 Berlin, GERMANY

DATE(S) OF TESTS: 15 to 31 January 2007

The apparatus, constructed in accordance with the description, drawings and photographs incorporated in this certificate has been subjected to the series of proving tests in accordance with:

IEC 60439-1:2004-04, Sub-clauses 8.2.1, 8.2.2, 8.2.3.2.3 b) d), 8.2.4.2, 8.2.5 and 8.2.7

The results are shown in the record of Proving Tests and the oscillograms attached hereto. The values obtained and the general performance are considered to comply with the above Standard(s) and to justify the ratings assigned by the manufacturer as stated below.

For ratings assigned by the manufacturer and proved by test see Page 1.

The record of Proving Tests applies only to the apparatus tested. The responsibility for conformity of any apparatus having the same designations with that tested rests with the Manufacturer.

This Certificate comprises: 48 pages, 5 diagrams, 10 oscillograms, 11 photographs, 2 drawings and no other sheets.

Only integral reproduction of this Certificate, or reproductions of this page accompanied by any pages on which are stated the assigned rated characteristics of the apparatus tested, are permitted without written permission from ASTA. ASTA Certification Services, Hilton House, Corporation Street, Rugby, Warwickshire, CV21 2DN United Kingdom.

ASTA Observer
H. Glabach
DIRECTOR

31st January 2007

ASTA

CERTIFICATE OF SELECTED TYPE TESTS

Laboratory Ref. No: **2676.1364.6.685** Certificate No. **16487**

APPARATUS: 415 V / 660 V / 8 kV (U_n / U_i / U_h), 50 Hz low-voltage switchgear assembly incorporating a three-phase with neutral and protective main busbar system and three outgoing circuits

DESIGNATION: Distribution Board - 1800 A

MANUFACTURER: Prime Electrical Manufacturing
Dubai Investment Park
P.O. Box: 122496
Dubai
UNITED ARAB EMIRATES

TESTED BY: Institut „Profitec“ für elektrische Hochleistungstechnik“ GmbH
Landsberger Allee 378 A
12681 Berlin, GERMANY

DATE(S) OF TESTS: 15 to 31 January 2007

The apparatus, constructed in accordance with the description, drawings and photographs incorporated in this certificate has been subjected to the series of proving tests in accordance with:

IEC 60439-1:2004-04, Sub-clauses 8.2.1, 8.2.2, 8.2.3.2.3 b) d), 8.2.4.2, 8.2.5 and 8.2.7

The results are shown in the record of Proving Tests and the oscillograms attached hereto. The values obtained and the general performance are considered to comply with the above Standard(s) and to justify the ratings assigned by the manufacturer as stated below.

For ratings assigned by the manufacturer and proved by test see Page 1.

The record of Proving Tests applies only to the apparatus tested. The responsibility for conformity of any apparatus having the same designations with that tested rests with the Manufacturer.

This Certificate comprises: 45 pages, 5 diagrams, 10 oscillograms, 15 photographs, 2 drawings and no other sheets.

Only integral reproduction of this Certificate, or reproductions of this page accompanied by any pages on which are stated the assigned rated characteristics of the apparatus tested, are permitted without written permission from ASTA. ASTA Certification Services, Hilton House, Corporation Street, Rugby, Warwickshire, CV21 2DN United Kingdom.

ASTA Observer
H. Glabach
DIRECTOR

31st January 2007

ASTA

CERTIFICATE OF SELECTED TYPE TESTS

Laboratory Ref. No: **2676.1364.6.687** Certificate No. **16489**

APPARATUS: 415 V / 660 V / 8 kV (U_n / U_i / U_h), 50 Hz low-voltage switchgear assembly incorporating a three-phase with neutral and protective main busbar system and ten outgoing circuits

DESIGNATION: Distribution Board - 400 A

MANUFACTURER: Prime Electrical Manufacturing
Dubai Investment Park
P.O. Box: 122496
Dubai
UNITED ARAB EMIRATES

TESTED BY: Institut „Profitec“ für elektrische Hochleistungstechnik“ GmbH
Landsberger Allee 378 A
12681 Berlin, GERMANY

DATE(S) OF TESTS: 16 to 31 January 2007

The apparatus, constructed in accordance with the description, drawings and photographs incorporated in this certificate has been subjected to the series of proving tests in accordance with:

IEC 60439-1:2004-04, Sub-clauses 8.2.1, 8.2.2, 8.2.3.2.3 b) d), 8.2.4.2, 8.2.5 and 8.2.7

The results are shown in the record of Proving Tests and the oscillograms attached hereto. The values obtained and the general performance are considered to comply with the above Standard(s) and to justify the ratings assigned by the manufacturer as stated below.

For ratings assigned by the manufacturer and proved by test see Page 1.

The record of Proving Tests applies only to the apparatus tested. The responsibility for conformity of any apparatus having the same designations with that tested rests with the Manufacturer.

This Certificate comprises: 38 pages, 5 diagrams, 5 oscillograms, 8 photographs, 1 drawing and no other sheets.

Only integral reproduction of this Certificate, or reproductions of this page accompanied by any pages on which are stated the assigned rated characteristics of the apparatus tested, are permitted without written permission from ASTA. ASTA Certification Services, Hilton House, Corporation Street, Rugby, Warwickshire, CV21 2DN United Kingdom.

ASTA Observer
H. Glabach
DIRECTOR

31st January 2007

ASTA

CERTIFICATE OF SELECTED TYPE TESTS

Laboratory Ref. No: **2676.1364.6.686** Certificate No. **16488**

APPARATUS: 415 V / 660 V / 8 kV (U_n / U_i / U_h), 50 Hz low-voltage switchgear assembly incorporating a three-phase with neutral and protective main busbar system and eight outgoing circuits

DESIGNATION: Distribution Board - 800 A

MANUFACTURER: Prime Electrical Manufacturing
Dubai Investment Park
P.O. Box: 122496
Dubai
UNITED ARAB EMIRATES

TESTED BY: Institut „Profitec“ für elektrische Hochleistungstechnik“ GmbH
Landsberger Allee 378 A
12681 Berlin, GERMANY

DATE(S) OF TESTS: 15 to 31 January 2007

The apparatus, constructed in accordance with the description, drawings and photographs incorporated in this certificate has been subjected to the series of proving tests in accordance with:

IEC 60439-1:2004-04, Sub-clauses 8.2.1, 8.2.2, 8.2.3.2.3 b) d), 8.2.4.2, 8.2.5 and 8.2.7

The results are shown in the record of Proving Tests and the oscillograms attached hereto. The values obtained and the general performance are considered to comply with the above Standard(s) and to justify the ratings assigned by the manufacturer as stated below.

For ratings assigned by the manufacturer and proved by test see Page 1.

The record of Proving Tests applies only to the apparatus tested. The responsibility for conformity of any apparatus having the same designations with that tested rests with the Manufacturer.

This Certificate comprises: 35 pages, 5 diagrams, 5 oscillograms, 8 photographs, 1 drawing and no other sheets.

Only integral reproduction of this Certificate, or reproductions of this page accompanied by any pages on which are stated the assigned rated characteristics of the apparatus tested, are permitted without written permission from ASTA. ASTA Certification Services, Hilton House, Corporation Street, Rugby, Warwickshire, CV21 2DN United Kingdom.

ASTA Observer
H. Glabach
DIRECTOR

31st January 2007

UL TYPE EXAMINATION CERTIFICATE

Certificate No. **UL TEO-0001**
Page **1/1**
Date of Issue **2013-03-08**

Applicant: Prime Electrical Manufacturing L.L.C.
P.O. Box: 122496,
Dubai Industrial City,
Dubai, UAE.

Manufacturer: Prime Electrical Manufacturing L.L.C.
P.O. Box: 122496,
Dubai Industrial City,
Dubai, UAE.

Product Sample Description: Low Voltage Power Switchgear and Controlgear Assembly (Panel Board), non-extensible, incorporating a three-phase and neutral vertical busbar system and protective busbar.

Designation: PRIMMA S800

Ratings: Rated operational voltage (UL): 415V
Rated current of the ASSEMBLY (UL): 800A
Rated frequency: 50 Hz
IP rating: IP 44

Product Sample Tested and found in compliance with Standard(s): IEC 61439-1 (ed. 2), IEC 61439-2 (ed. 2)

Test Report Nos. Additional information: 12CA36854 issue date 2013-03-07
N/A

Certification Manager: Jørn-Erik Storgaard

Certification Body: UL International Demko A/S, Borupvang 5A, 2750 Ballerup, Denmark, Tel. +45 44 85 85 85
info.dk@ul.com www.ul.com

UL TYPE EXAMINATION CERTIFICATE

Certificate No. **UL TEO-0012**
Page **1/1**
Date of Issue **2013-05-05**

Applicant: Prime Electrical Manufacturing L.L.C.
P.O. Box: 122496,
Dubai Industrial City,
Dubai, UAE.

Manufacturer: Prime Electrical Manufacturing L.L.C.
P.O. Box: 122496,
Dubai Industrial City,
Dubai, UAE.

Product Sample Description: Low Voltage Power Switchgear and Controlgear Assembly (Main Distribution Board), extensible, incorporating a three-phase and neutral horizontal and vertical busbar system and protective busbar.

Designation: PRIMMA S1600

Ratings: Rated operational voltage (UL): 415V
Rated current of the ASSEMBLY (UL): 1600A
Rated frequency: 50 Hz
IP rating: IP 43

Product Sample Tested and found in compliance with Standard(s): IEC 61439-1 (ed. 2), IEC 61439-2 (ed. 2)

Test Report Nos. Additional information: 13CA16650 issue date 2013-05-31
N/A

Certification Manager: Jørn-Erik Storgaard

Certification Body: UL International Demko A/S, Borupvang 5A, 2750 Ballerup, Denmark, Tel. +45 44 85 85 85
info.dk@ul.com www.ul.com

Approvals & Certification

Industrial License

License No: 678741

Company Name: PRIME ELECTRICAL MANUFACTURING L.L.C.

Trade Name: PRIME ELECTRICAL MANUFACTURING L.L.C.

Issue Date: 11/04/2010

Expiry Date: 27/08/2017

Commercial License

License No: CN-1170749

Trade Name: Prime Electrical Manufacturing (Llc) - Abu Dhabi Branch - Sale Exit

Issue Date: 28/08/2016

Expiry Date: 27/08/2017

Manufacturer

Regd No: 400020

Company Name: PRIME ELECTRICAL MANUFACTURING L.L.C.

Issue Date: 01.08.2017

Expiry Date: 01.08.2018

Certificate

Prime Electrical Manufacturing LLC

Certified Panel Builder (Gold)

Product: Primes TT & Busbar Systems

TUV NORD CERTIFICATE

Management system as per ISO 9001:2008

Prime Electrical Manufacturing L.L.C.

Dubai Industrial City

Approval of LV Switchgear Material

Ref: ADDC/LVSGC/17/270705145

Date: 02 MAY 2017

To: M/s. Prime Electrical Manufacturing L.L.C.

Subject: Approval of LV Switchgear Material

Facsimile Transmission

Date: 17/Dec/2013

Subject: PRE-QUALIFICATION OF LVAC SWITCHBOARDS FOR 132kV SUBSTATIONS

- All the breakers (both the incoming and outgoing) shall be restricted to the components used in the test or to be tested by any of the approved certified authorities.
- Submission of certificate of conformity for every switchgear assembly, at every delivery.
- Provision of the performance data of the switchgear from the owners of the installation for a period of 3 years.
- Any malfunction or repeated faults during this period may lead to the cancellation of the ADDC approval.
- It is the responsibility of the manufacturer to comply with any updated IEC Standards that would be released during these period by means of additional test as required.

شهادة تسجيل فرع مؤسسية

م/s. Prime Electrical Manufacturing L.L.C.

استمارة بعض بيانات السجل التجاري

M/s. Prime Electrical Manufacturing L.L.C.

استمارة بعض بيانات السجل التجاري

M/s. Prime Electrical Manufacturing L.L.C.



Our Location

GPS Co-ordinates :

24° 49'40.33"N, 55° 5'28.74"E



DUBAI
 PO Box 122496
 DIC Jabel Ali, Dubai, UAE
 Tel : +971 4 4531 666
 Fax : +971 4 4531 662

ABU DHABI
 PO Box 132566
 Musafah, Abu Dhabi, UAE
 Tel : +971 2 5506 133
 Fax : +971 2 5506 134

DOHA (QATAR)
 PO Box 2121
 Tel : +974 40164298-99
 Fax : +974 40164300

RIYADH (KSA)
 Tel : +966 1 4322795
 Fax : +966 1 4322795
 CR No. : 1111002224

Franchised
 Panel Builder of



برايم للصناعات الكهربية (ش.ذ.م.م.)

E-mail: info@primeelectricalmfg.com, www.primerelectricalmfg.com